

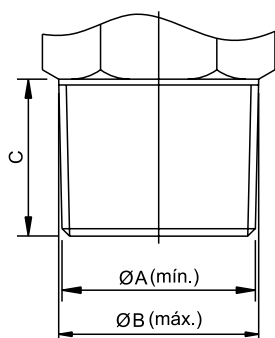
TABELA DE CONVERSÃO

psi	lb/pol ² .	kg/cm ²	bar
10	10	0,70	0,70
50	50	3,51	3,51
100	100	7,03	7,03
150	150	10,54	10,54
200	200	14,06	14,06
250	250	17,57	17,57
300	300	21,09	21,09
350	350	24,60	24,60
400	400	28,12	28,12
450	450	31,63	31,63
500	500	35,15	35,15
550	550	38,67	38,67
600	600	42,18	42,18
650	650	45,70	45,70
700	700	49,21	49,21
750	750	52,73	52,73
800	800	56,24	56,24
850	850	59,76	59,76
900	900	63,27	63,27
950	950	66,79	66,79
1000	1000	70,31	70,31

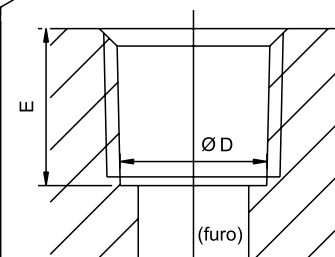
ROSCA NPT CÔNICA

ROSCA	FIOS P/ POL.	Ø A (mín.)	Ø B (máx.)	C	Ø D (furo)	E
1/8 NPT	27	9.9	10.3	9.0	8.5	9.0
1/4 NPT	18	13.2	13.7	13.5	11.2	13.5
3/8 NPT	18	16.6	17.2	13.5	14.5	13.5
1/2 NPT	14	20.6	21.3	18.0	18.0	18.0
3/4 NPT	14	26.0	26.7	18.0	23.0	18.0
1 NPT	11.5	32.5	33.4	18.0	29.0	18.0

MACHO



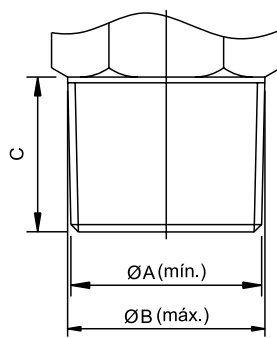
FÊMEA



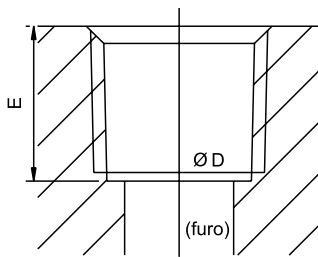
ROSCA BSPT CÔNICA

ROSCA	FIOS P/ POL.	Ø A (mín.)	Ø B (máx.)	C	Ø D (furo)	E
1/8 BSPT	28	9.4	9.8	9.0	8.8	9.0
1/4 BSPT	19	12.7	13.4	13.5	11.8	13.5
3/8 BSPT	19	16.2	16.8	13.5	15.3	13.5
1/2 BSPT	14	20.3	21.1	18.0	19.0	18.0
3/4 BSPT	14	25.7	26.7	18.0	24.5	18.0
1 BSPT	11	32.5	33.5	18.0	30.8	18.0

MACHO



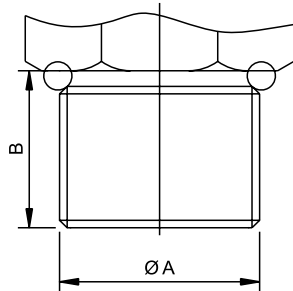
FÊMEA



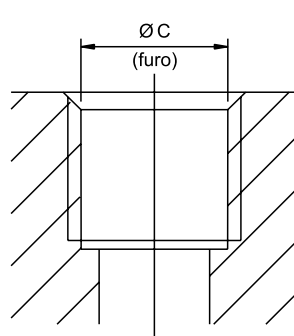
ROSCA MÉTRICA PARALELA

ROSCA	FIOS P/ POL.	Ø A	B	Ø C (FURO)
M 5.0	0.8	4.9	4.5	4.2
M 10.0	1.0	9.9	10.0	9.0
M 12.0	1.5	11.8	10.0	10.5
M 16.0	1.5	15.8	10.0	14.5
M 22.0	1.5	21.8	13.0	20.5

MACHO



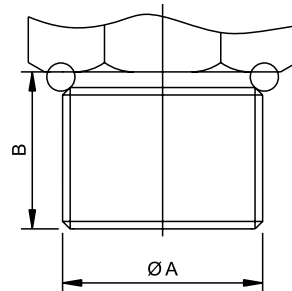
FÊMEA



ROSCA BSP PARALELA

ROSCA	FIOS P/ POL.	Ø A	B	Ø C (FURO)
1/8 BSP	28	9.6	5.0	8.8
1/4 BSP	19	13.0	5.5	11.8
3/8 BSP	19	16.5	9.0	15.3
1/2 BSP	14	20.8	10.0	19.0

MACHO



FÊMEA

